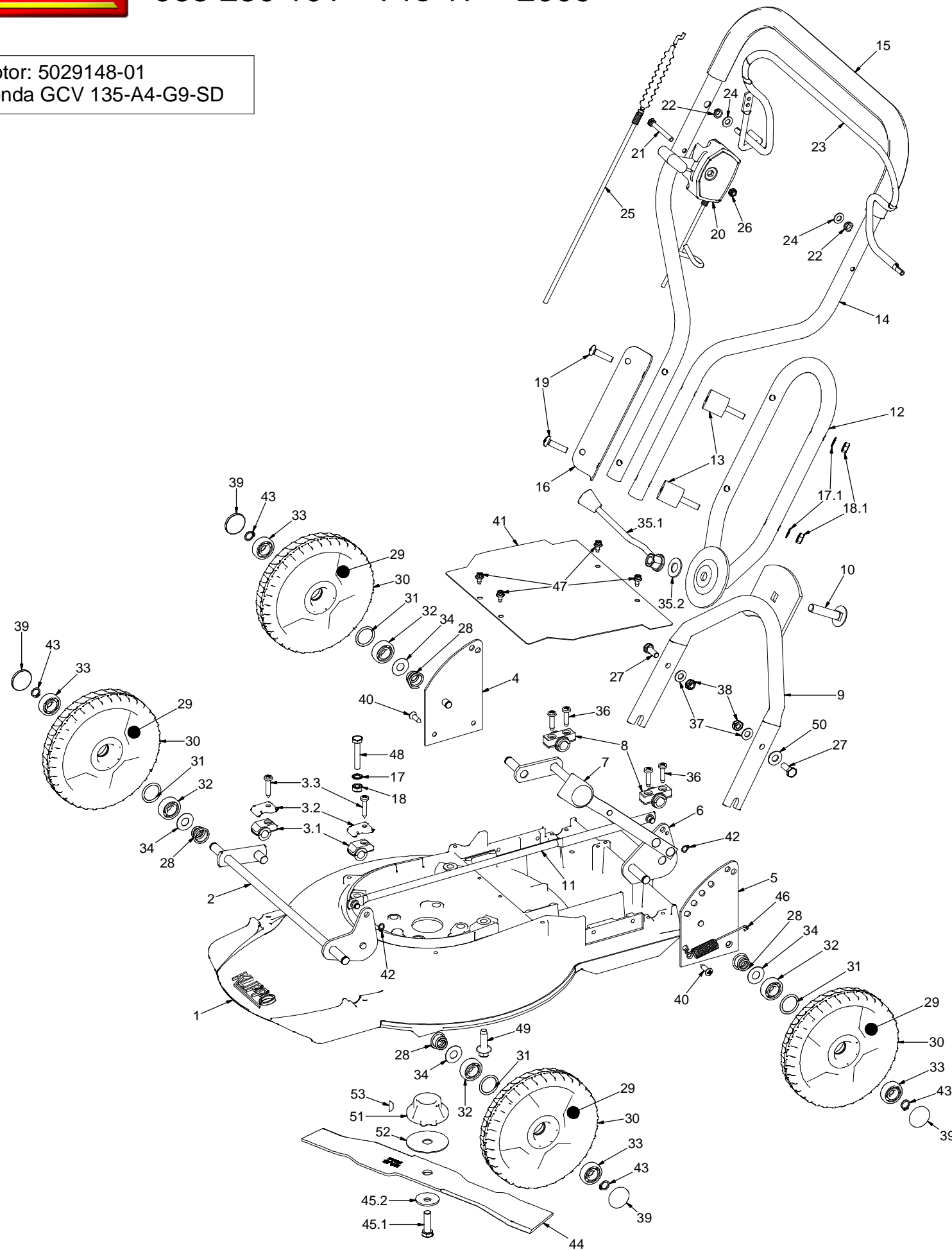




965 230 101 – Pro 17 – 2009

Motor: 5029148-01
Honda GCV 135-A4-G9-SD



Pos	Art.number	Art.nr Klippo	Description
1	5032472-01	0111	COVER 42, RED
2	5032709-01	0719	FRONT SHAFT 42
3	5032742-01	0917	BEARING SLEEVE
4	5032659-01	0508	CORNER RIGHT
5	5054816-01	0209	CORNER LEFT
6	5032566-01	0244	REAR SHAFT
7	5044647-01	7418	KNOB, BLACK
8	5044635-01	74021	HOLDER REAR SHAFT
9	5028700-01	1131	HANDLE LOWER
10	5044566-01	7025	WAGON BOLT M12x55
11	5032497-01	0235	HEIGHT ADJUST BAR 42, RED
12	5029035-01	12413	UNDER PART
13	5033136-01	1366	VIBRATION ABSORVER
14	5029064-01	13452	HANDLE UPPER, YELLOW
15	5230528-01	N/A	HANDLE GRIP, BLACK
16	5033117-01	1346	PLATE FOR HANDLE
17	5044580-01	7039	LOCK WASHER 8.4 FZ
18	5044572-01	7032	NUT M6M M8 FZ
19	5044615-01	7089	SCREW M8X30 ESLOCK
20	5033130-01	1359	THROTTLE CONTROL
21	5028823-01	70021	SCREW M6S M6x55 FZ
22	5033209-01	1554	LOOP BUSHING
23	5033131-01	1360	CONTROL BAR, RED
24	5044592-01	7058	WASHER NB 16X8X1,5 FZ
25	5033112-01	1340	BRAKE WIRE
26	5044561-01	7018	LOCK NUT M6 NYLOCK FZ
27	5044558-01	7010	SCREW M6S M8x20 FZ
28	5033330-01	2220	COMPRESSION SPRING
29	5032756-01	1020	FREE WHEEL, RED
30	5032765-01	1073	TYRE 180
31	5044618-01	7092	SPACER
32	5032429-01	70091	BALL BEARING Ø12/32x10
33	5028827-01	70081	BALL BEARING Ø12/32x9
34	5044576-01	7036	WASHER 27x12,2x0.5 FZ
35	5032982-01	1300	BALL HANDLE WITH WASHER
36	5044571-01	70301	SCREW RTS 6.3X25 FZ
37	5044610-01	7083	WASHER SRB 18x9x1,5 FZ
38	5044589-01	7052	LOCK NUT M8 NYLOCK FZ
39	5032751-01	1010	HUB CAP
40	5044565-01	7024	SCREW KFTS 6.3X25 FZ
41	5033205-01	1526	COVER SHEET
42	5044581-01	7040	CLAMP RING SGA 8X0.8
43	5044583-01	7042	CLAMP RING SGA 12X1.5
44	5029757-01	6016	MULCHER BLADE 42
45	5029432-01	0905	SCREW AND CUP SPRING
46	5032576-01	0264	TENSION SPRING
47	5044616-01	7090	SCREW M5x10 FZ
48	5044662-01	7603	SCREW M6S M8X45 FZ
49	5028829-01	70701	SCREW DG-93x30Z FZ
50	5044668-01	7616	WASHER BRB 22x10,5x2 FZ
51	5032585-01	0303	BLADE BRACKET
52	5032594-01	0323	FIBRE WASHER
53	5044605-01	7075	WOODRUF WEDGE

REMARKS:

POS 6: INCLUDE POS 7.

POS 9: INCLUDE POS 10.

POS 14: INCLUDE POS 15.

POS 29: INCLUDES POS 30, 31, 32 AND 33.

POS 44: INCLUDE POS 52.

KITS:

5029435-01 (0914) BLADE BRACKET WITH SCREW:
CONSIST OF POS 45.1, 45.2, 51, 52 AND 53.

5032722-01 (0903) ACCESSORIES FOR WHEEL:
CONSIST OF POS 28, 34, 39 AND 43 (4 OF EACH).

5033137-01 (1367) HANDLE UPPER COMPL
CONSIST OF POS 12, 13, 14, 15, 16, 17.1, 18.1, 19,
20, 21, 22, 23, 24, 25 AND 26.