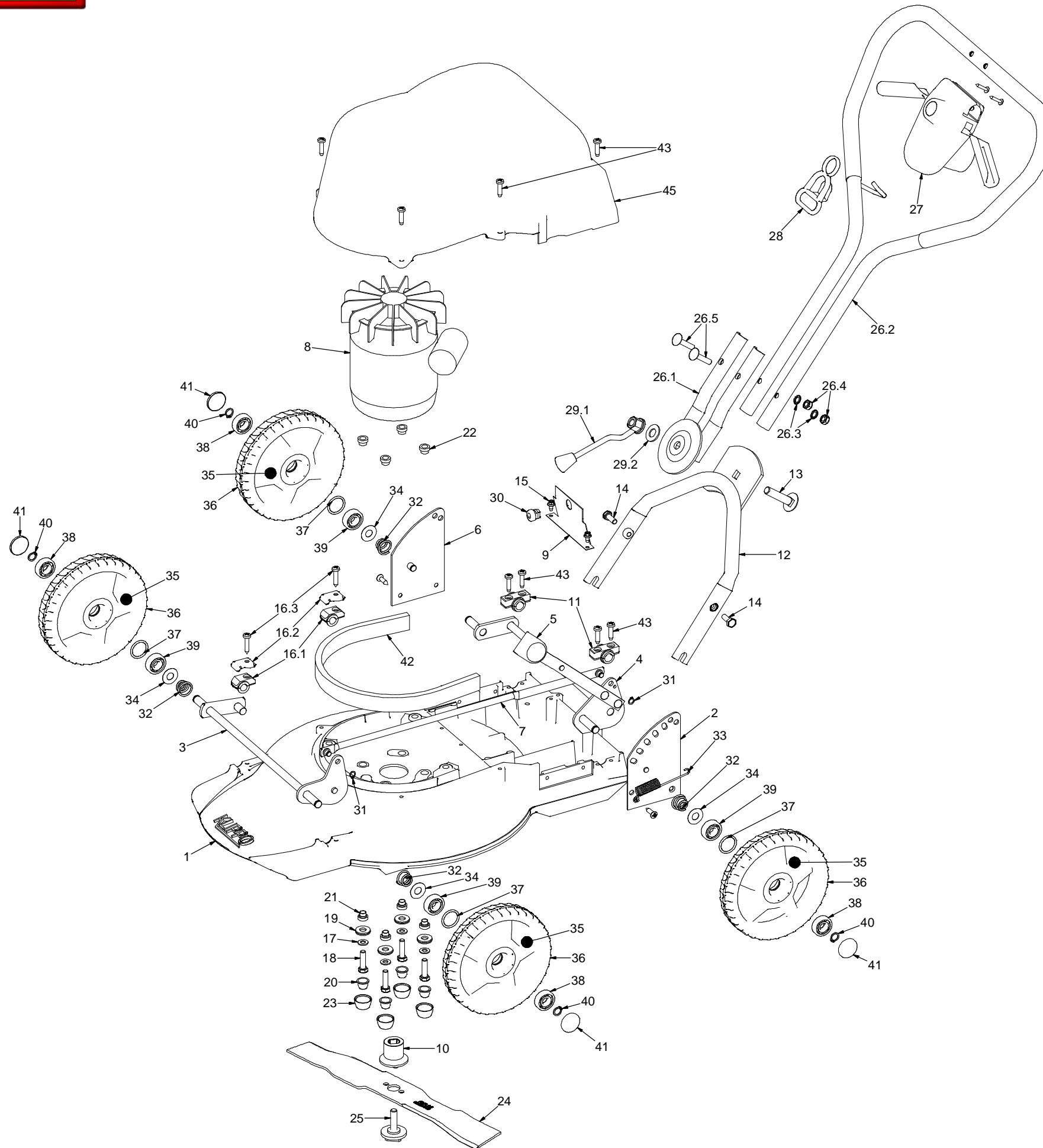




965 229 701 – Energy – 2009



Pos	Art.number	Art.nr Klippo	Description
1	5028918-01	01112	COVER 42, RED
2	5032491-01	0208	CORNER LEFT
3	5032709-01	0719	FRONT SHAFT 42
4	5032566-01	0244	REAR SHAFT
5	5044647-01	7418	KNOB, BLACK
6	5032659-01	0508	CORNER RIGHT
7	5032497-01	0235	HEIGHT ADJUST BAR 42, RED
8	5033349-01	5058	ELECTRIC MOTOR
9	5033201-01	1516	SHEET BACK
10	5032589-01	0309	BLADE BRACKET
11	5044635-01	74021	HOLDER REAR SHAFT
12	5032826-01	1125	HANDLE LOWER, YELLOW
13	5044566-01	7025	WAGON BOLT M12x55
14	5044558-01	7010	SCREW M6S M8x20 FZ
15	5044616-01	7090	SCREW M5x10 FZ
16	5032742-01	0917	BEARING SLEEVE
17	5044592-01	7058	WASHER NB 16X8X1,5 FZ
18	5044591-01	7056	SCREW M6S M8x30 FZ
19	5028855-01	74311	HAT WASHER
20	5028856-01	74321	PROTECTION PLUG
21	5033359-01	5082	INSULATING BUSHING MALE
22	5033358-01	5081	INSULATING BUSHING FEMALE
23	5028858-01	74351	PROTECTION HAT
24	5029871-01	6020	MULCHER BLADE
25	5032595-01	0332	BLADE SCREW
26	5032858-01	1210	HANDLE UPPER, YELLOW / RED
27	5032978-01	1291	START CONTROL
28	5032856-01	1200	STRAIN RELIEVER
29	5032982-01	1300	BALL HANDLE WITH WASHER
30	5028857-01	74331	CABLE GROMMET
31	5044581-01	7040	CLAMP RING SGA 8X0.8
32	5033330-01	2220	COMPRESSION SPRING
33	5032576-01	0264	TENSION SPRING
34	5044576-01	7036	WASHER 27x12,2x0.5 FZ
35	5032756-01	1020	FREE WHEEL, RED
36	5032765-01	1073	TYRE 180
37	5044618-01	7092	SPACER
38	5028827-01	70081	BALL BEARING Ø12/32x9
39	5032429-01	70091	BALL BEARING Ø12/32x10
40	5044583-01	7042	CLAMP RING SGA 12X1.5
41	5032751-01	1010	HUB CAP
42	5044632-01	7400	DUST FILTER
43	5044571-01	70301	SCREW RTS 6.3X25 FZ
44	5044565-01	7024	SCREW KFTS 6.3X25 FZ
45	5028919-01	01122	HOOD

REMARKS:

POS 4: INCLUDE POS 5.

POS 12: INCLUDE POS 13.

POS 16: INCLUDES POS 16.1, 16.2, AND 16.3 (2 OF EACH).

POS 35: INCLUDES POS 36, 37, 38 AND 39.

KIT:

5032722-01 (0903) ACCESSORIES FOR WHEEL:  
CONSIST OF POS 32, 34, 40 AND 41 (4 OF EACH).