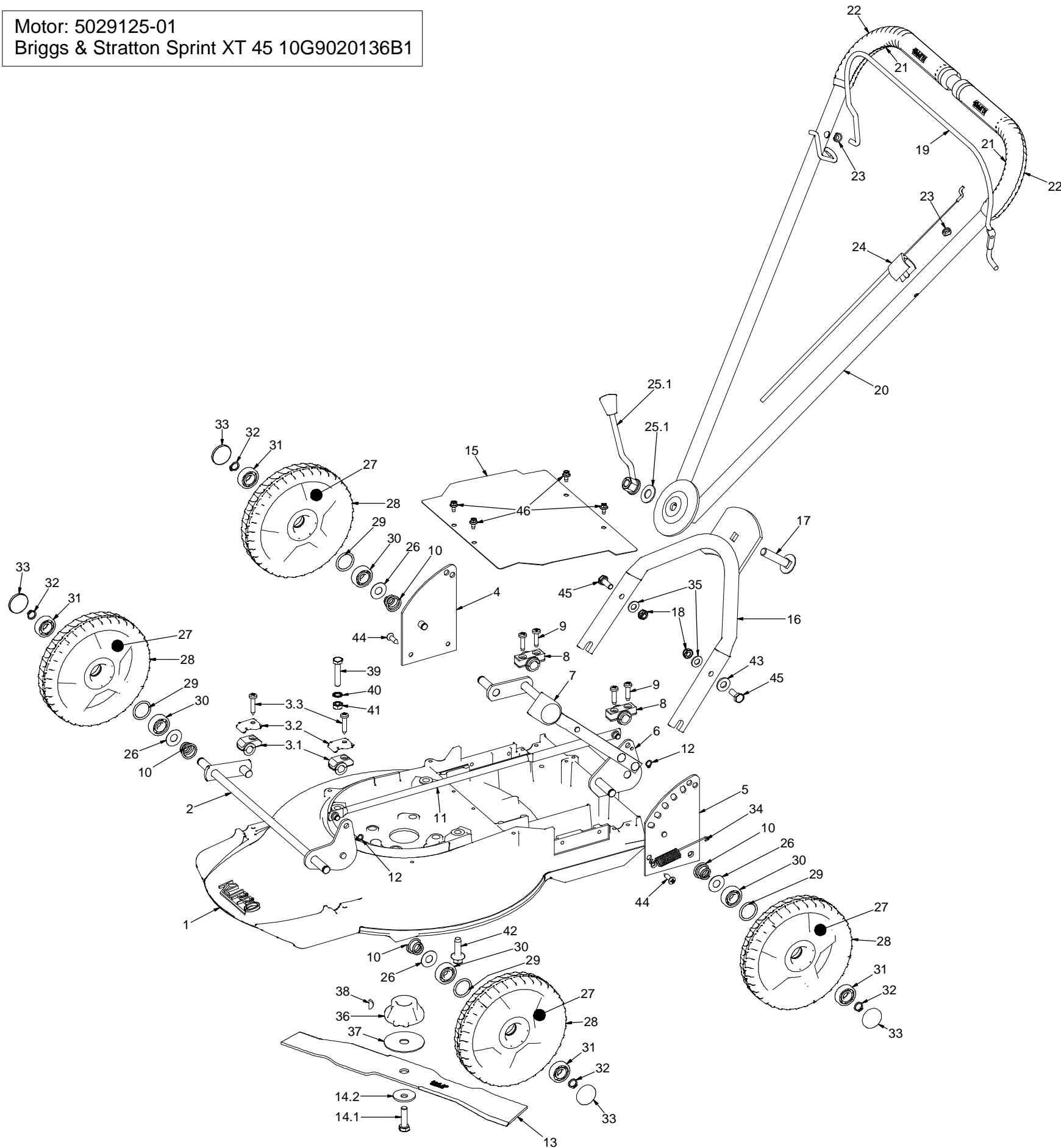




965 229 601 – Triumph – 2009

Motor: 5029125-01
Briggs & Stratton Sprint XT 45 10G9020136B1



Pos	Art.number	Art.nr Klippo	Description
1	5032472-01	0111	COVER 42, RED
2	5032709-01	0719	FRONT SHAFT 42
3	5032742-01	0917	BEARING SLEEVE
4	5032659-01	0508	CORNER RIGHT
5	5032491-01	0208	CORNER LEFT
6	5032566-01	0244	REAR SHAFT
7	5044647-01	7418	KNOB, BLACK
8	5044635-01	74021	HOLDER REAR SHAFT
9	5044571-01	70301	SCREW RTS 6.3X25 FZ
10	5033330-01	2220	COMPRESSION SPRING
11	5032497-01	0235	HEIGHT ADJUST BAR 42, RED
12	5044581-01	7040	CLAMP RING SGA 8X0.8
13	5029757-01	6016	MULCHER BLADE 42
14	5029432-01	0905	SCREW AND CUP SPRING
15	5033205-01	1526	COVER SHEET
16	5032795-01	1109	HANDLE LOWER, YELLOW
17	5044566-01	7025	WAGON BOLT M12x55
18	5044589-01	7052	LOCK NUT M8 NYLOCK FZ
19	5032970-01	1281	CONTROL BAR, RED
20	5033135-01	1365	HANDLE UPPER, YELLOW
21	5044653-01	743011	HANDLE GRIP, RED
22	5044654-01	743012	HANDLE GRIP, RED
23	5033209-01	1554	LOOP BUSHING
24	5033134-01	1363	BRAKE WIRE
25	5032982-01	1300	BALL HANDLE WITH WASHER
26	5044576-01	7036	WASHER 27x12,2x0.5 FZ
27	5032756-01	1020	FREE WHEEL, RED
28	5032765-01	1073	TYRE 180
29	5044618-01	7092	SPACER
30	5032429-01	70091	BALL BEARING Ø12/32x10
31	5028827-01	70081	BALL BEARING Ø12/32x9
32	5044583-01	7042	CLAMP RING SGA 12X1.5
33	5032751-01	1010	HUB CAP
34	5032576-01	0264	TENSION SPRING
35	5044610-01	7083	WASHER SRB 18x9x1,5 FZ
36	5032582-01	0300	BLADE BRACKET
37	5032594-01	0323	FIBRE WASHER
38	5044562-01	7019	WOODRUF WEDGE
39	5044569-01	7028	SCREW M6S M8x40 FZ
40	5044580-01	7039	LOCK WASHER 8.4 FZ
41	5044572-01	7032	NUT M6M M8 FZ
42	5028829-01	70701	SCREW DG-93x30Z FZ
43	5044668-01	7616	WASHER BRB 22x10,5x2 FZ
44	5044565-01	7024	SCREW KFTS 6.3X25 FZ
45	5044558-01	7010	SCREW M6S M8x20 FZ
46	5044616-01	7090	SCREW M5x10 FZ

REMARKS:

POS 3: INCLUDES POS 3.1, 3.2, AND 3.3 (2 OF EACH).

POS 6: INCLUDE POS 7.

pos 13: INCLUDE POS 37.

POS 16: INCLUDE POS 17.

POS 20: INCLUDES POS 21 AND 22.

POS 27: INCLUDES POS 28, 29, 30 AND 31.

KITS:

5029436-01 (0915) BLADE BRACKET WITH SCREW: CONSIST OF POS 14, 36, 37 AND 38.

5032722-01 (0903) ACCESSORIES FOR WHEEL: CONSIST OF POS 10, 26, 32 AND 33 (4 OF EACH).