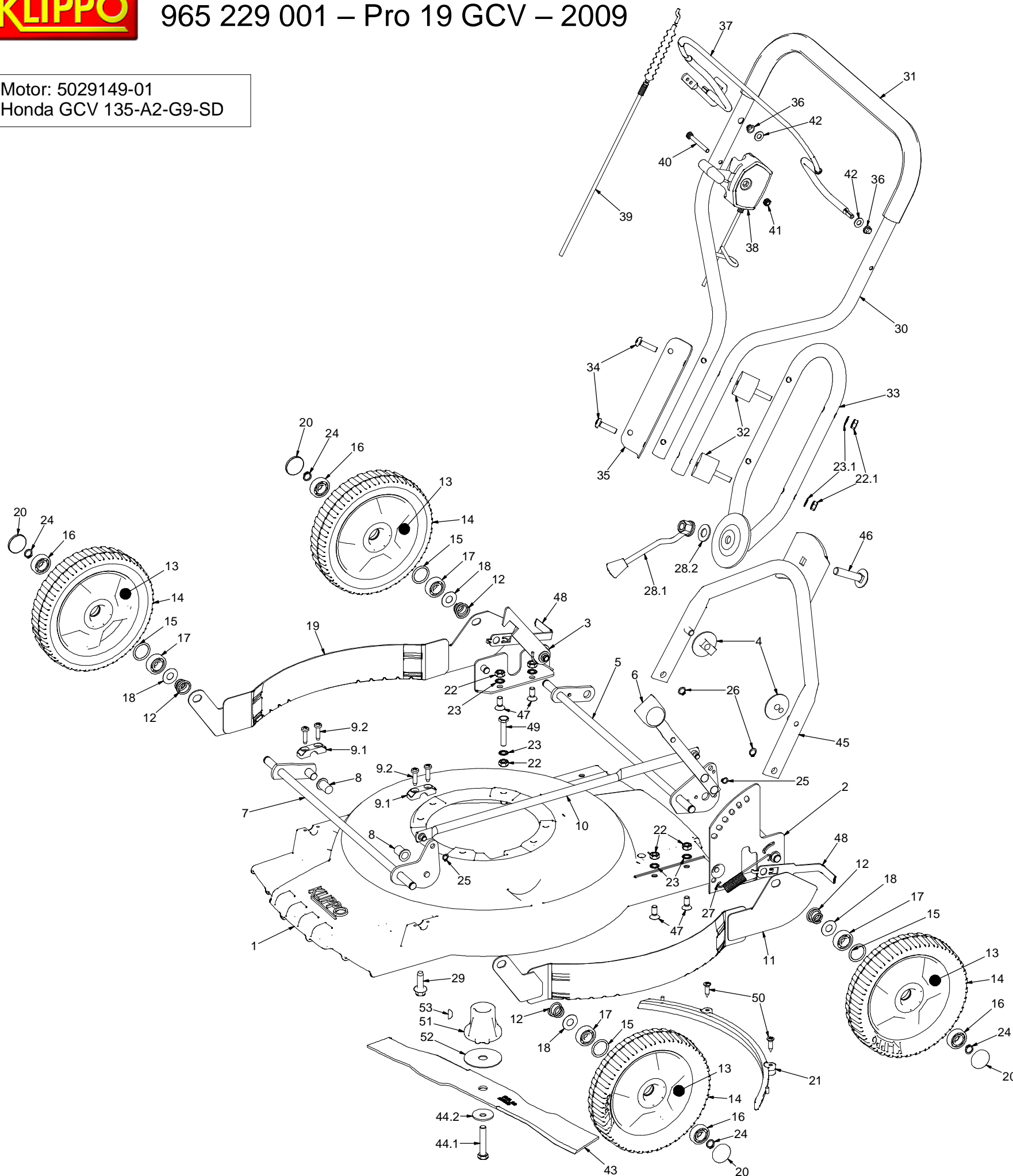




# 965 229 001 – Pro 19 GCV – 2009

Motor: 5029149-01  
Honda GCV 135-A2-G9-SD



Pos	Art.number	Art.nr Klippo	Description
1	5032479-01	0119	COVER 48, RED
2	5032490-01	0207	HANDLE HOLDER LEFT, RED
3	5032658-01	0507	CORNER RIGHT, RED
4	5044645-01	7415	ADJUSTING WHEEL, RED
5	5032580-01	0272	REAR SHAFT
6	5044647-01	7418	KNOB, BLACK
7	5032693-01	0713	FRONT SHAFT 48
8	5028981-01	7411	CASING, RED
9	5032719-01	0902	FRONT SHAFT HOLDER, RED
10	5032495-01	0228	HEIGHT ADJUST BAR 48, RED
11	5032640-01	0418	SIDE PROTECTION LEFT
12	5033330-01	2220	COMPRESSION SPRING
13	5032754-01	1018	FREE WHEEL, RED
14	5029451-01	1072	TYRE 43
15	5044618-01	7092	SPACER
16	5028827-01	70081	BALL BEARING Ø12/32x9
17	5032429-01	70091	BALL BEARING Ø12/32x10
18	5044576-01	7036	WASHER 27x12,2x0.5 FZ
19	5032641-01	0419	SIDE PROTECTION RIGHT
20	5032751-01	1010	HUB CAP
21	5032430-01	7437	MULCHER WALL 48
22	5044572-01	7032	NUT M6M M8 FZ
23	5044580-01	7039	LOCK WASHER 8.4 FZ
24	5044583-01	7042	CLAMP RING SGA 12X1.5
25	5044581-01	7040	CLAMP RING SGA 8X0.8
26	5044582-01	7041	CLAMP RING SGA 10X1
27	5032576-01	0264	TENSION SPRING
28	5032982-01	1300	BALL HANDLE WITH WASHER
29	5028829-01	70701	SCREW DG-93x30Z FZ
30	5029064-01	13452	HANDLE UPPER, YELLOW
31	5230528-01	N/A	HANDLE GRIP, BLACK
32	5033125-01	1354	VIBRATION ABSORBER
33	5029035-01	12413	UNDER PART
34	5044615-01	7089	SCREW M8X30 ESLOCK
35	5033117-01	1346	PLATE FOR HANDLE
36	5033209-01	1554	LOOP BUSHING
37	5033131-01	1360	CONTROL BAR, RED
38	5033130-01	1359	THROTTLE CONTROL
39	5033112-01	1340	BRAKE WIRE
40	5028823-01	70021	SCREW M6S M6x55 FZ
41	5044561-01	7018	LOCK NUT M6 NYLOCK FZ
42	5044592-01	7058	WASHER NB 16X8X1,5 FZ
43	5029780-01	6017	MULCHER BLADE 48
44	5032727-01	0908	SCREW AND CUP SPRING
45	5032838-01	1129	HANDLE LOWER
46	5044566-01	7025	WAGON BOLT M12x55
47	5044570-01	7029	SCREW MFS M8X18 FZ
48	5032773-01	1087	WHEEL CLEANER
49	5044662-01	7603	SCREW M6S M8X45 FZ
50	5044565-01	7024	SCREW KFTS 6.3X25 FZ
51	5032583-01	0301	BLADE BRACKET
52	5032594-01	0323	FIBRE WASHER
53	5044605-01	7075	WOODRUF WEDGE

### REMARKS:

- POS 5: INCLUDE POS 6.
- POS 13: INCLUDES POS 14, 15, 16 AND 17.
- POS 30: INCLUDE POS 31.
- POS 43: INCLUDE POS 52.
- POS 45: INCLUDE POS 46.

### KITS:

- 5029322-01 (0924) BLADE BRACKET  
CONSIST OF POS 44.1, 44.2, 51, 52 AND 53.
- 5032722-01 (0903)  
ACCESSORIES FOR WHEEL  
CONSIST OF POS 12, 18, 20 AND 24  
(4 OF EACH).
- 5033115-01 (1344) HANDLE UPPER COMPL  
CONSIST OF POS 22.1, 23.1, 30, 31, 32, 33,  
34, 35, 36, 37, 38, 39, 40, 41 AND 42.