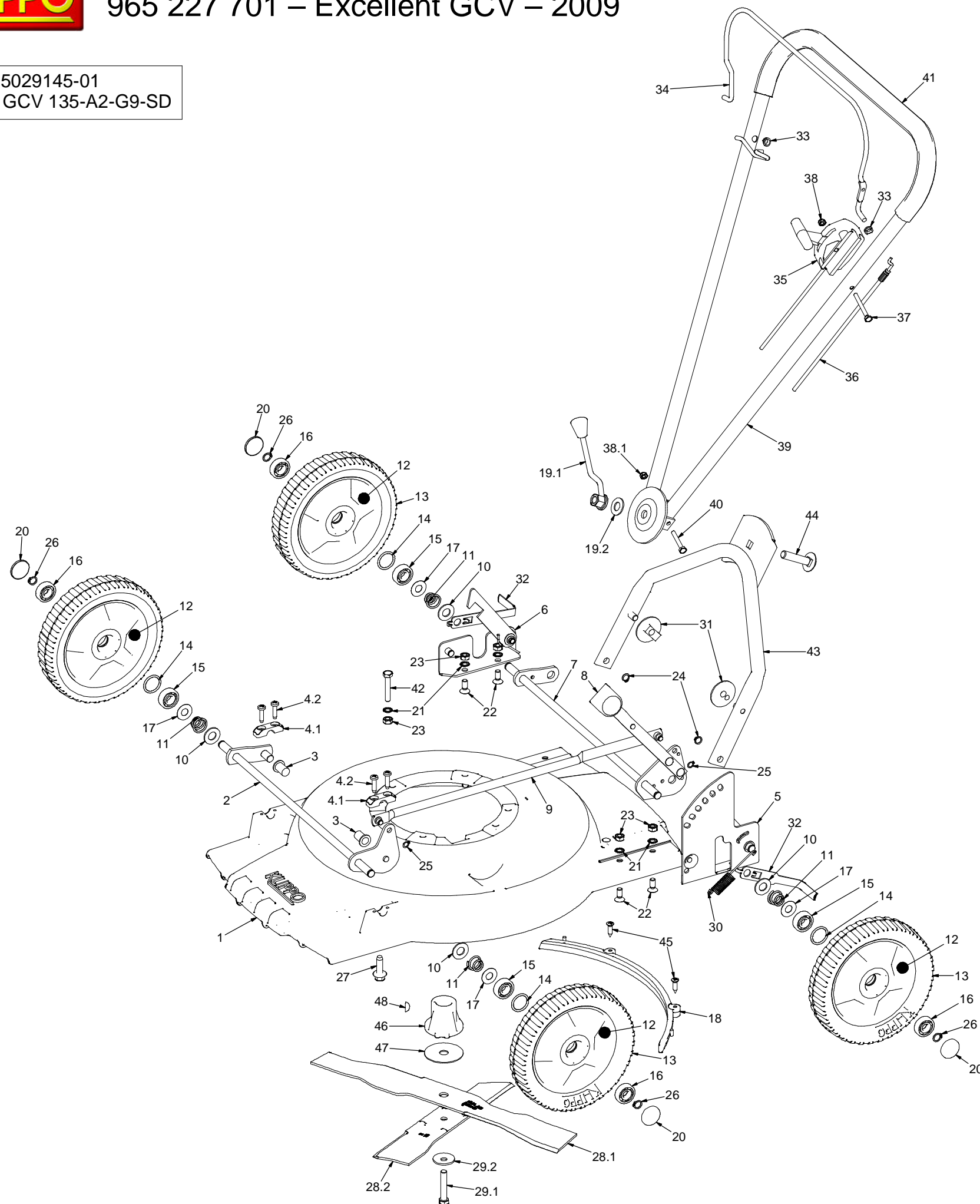




965 227 701 – Excellent GCV – 2009

Motor: 5029145-01
Honda GCV 135-A2-G9-SD



| Pos | Art.number | Art.nr Klippo | Description |
|-----|------------|---------------|---------------------------|
| 1 | 5032479-01 | 0119 | COVER 48, RED |
| 2 | 5032693-01 | 0713 | FRONT SHAFT 48 |
| 3 | 5028981-01 | 7411 | CASING, RED |
| 4 | 5032719-01 | 0902 | FRONT SHAFT HOLDER, RED |
| 5 | 5032490-01 | 0207 | HANDLE HOLDER LEFT, RED |
| 6 | 5032658-01 | 0507 | CORNER RIGHT, RED |
| 7 | 5032580-01 | 0272 | REAR SHAFT |
| 8 | 5044647-01 | 7418 | KNOB, BLACK |
| 9 | 5032495-01 | 0228 | HEIGHT ADJUST BAR 48, RED |
| 10 | 5044573-01 | 7033 | WASHER SRB 28x14x2 FZ |
| 11 | 5033330-01 | 2220 | COMPRESSION SPRING |
| 12 | 5032754-01 | 1018 | FREE WHEEL, RED |
| 13 | 5029451-01 | 1072 | TYRE 43 |
| 14 | 5044618-01 | 7092 | SPACER |
| 15 | 5032429-01 | 70091 | BALL BEARING Ø12/32x10 |
| 16 | 5028827-01 | 70081 | BALL BEARING Ø12/32x9 |
| 17 | 5044576-01 | 7036 | WASHER 27x12,2x0.5 FZ |
| 18 | 5032430-01 | 7437 | MULCHER WALL 48 |
| 19 | 5032982-01 | 1300 | BALL HANDLE WITH WASHER |
| 20 | 5032751-01 | 1010 | HUB CAP |
| 21 | 5044580-01 | 7039 | LOCK WASHER 8.4 FZ |
| 22 | 5044570-01 | 7029 | SCREW MFS M8X18 FZ |
| 23 | 5044572-01 | 7032 | NUT M6M M8 FZ |
| 24 | 5044582-01 | 7041 | CLAMP RING SGA 10X1 |
| 25 | 5044581-01 | 7040 | CLAMP RING SGA 8X0.8 |
| 26 | 5044583-01 | 7042 | CLAMP RING SGA 12X1.5 |
| 27 | 5028829-01 | 70701 | SCREW DG-93x30Z FZ |
| 28 | 5029689-01 | 6008 | CROSS CUT 48 |
| 29 | 5032727-01 | 0908 | SCREW WITH CUP SPRING |
| 30 | 5032576-01 | 0264 | TENSION SPRING |
| 31 | 5044640-01 | 7410 | ADJUSTING WHEEL, BLACK |
| 32 | 5032773-01 | 1087 | WHEEL CLEANER |
| 33 | 5033209-01 | 1554 | LOOP BUSHING |
| 34 | 5032970-01 | 1281 | CONTROL BAR, RED |
| 35 | 5033108-01 | 1336 | THROTTLE CONTROL |
| 36 | 5033109-01 | 1337 | BRAKE WIRE |
| 37 | 5028823-01 | 70021 | SCREW M6S M6x55 FZ |
| 38 | 5044561-01 | 7018 | LOCK NUT M6 NYLOCK FZ |
| 39 | 5033159-01 | 1391 | HANDLE UPPER, YELLOW |
| 40 | 5044685-01 | 7807 | SCREW M6S M6x40 FZ |
| 41 | 5230528-01 | N/A | HANDLE GRIP, BLACK |
| 42 | 5044662-01 | 7603 | SCREW M6S M8X45 FZ |
| 43 | 5032843-01 | 1130 | HANDLE LOWER, YELLOW |
| 44 | 5044566-01 | 7025 | WAGON BOLT M12x55 |
| 45 | 5044565-01 | 7024 | SCREW KFTS 6.3X25 FZ |
| 46 | 5032583-01 | 0301 | BLADE BRACKET |
| 47 | 5032594-01 | 0323 | FIBRE WASHER |
| 48 | 5044605-01 | 7075 | WOODRUF WEDGE |

REMARKS:

POS 7: INCLUDE POS 8.

POS 12: INCLUDES POS 13, 14, 15 AND 16.

POS 39: INCLUDES POS 38.1, 40 AND 41.

POS 43: INCLUDE POS 44.

KITS:

5029322-01 (0924) BLADE BRACKET
CONSIST OF 29.1, 29.2, 46, 47 AND 48.

5032722-01 (0903) ACCESSORIES FOR WHEEL
CONSIST OF POS 11, 17, 20 AND 26 (4 OF EACH).