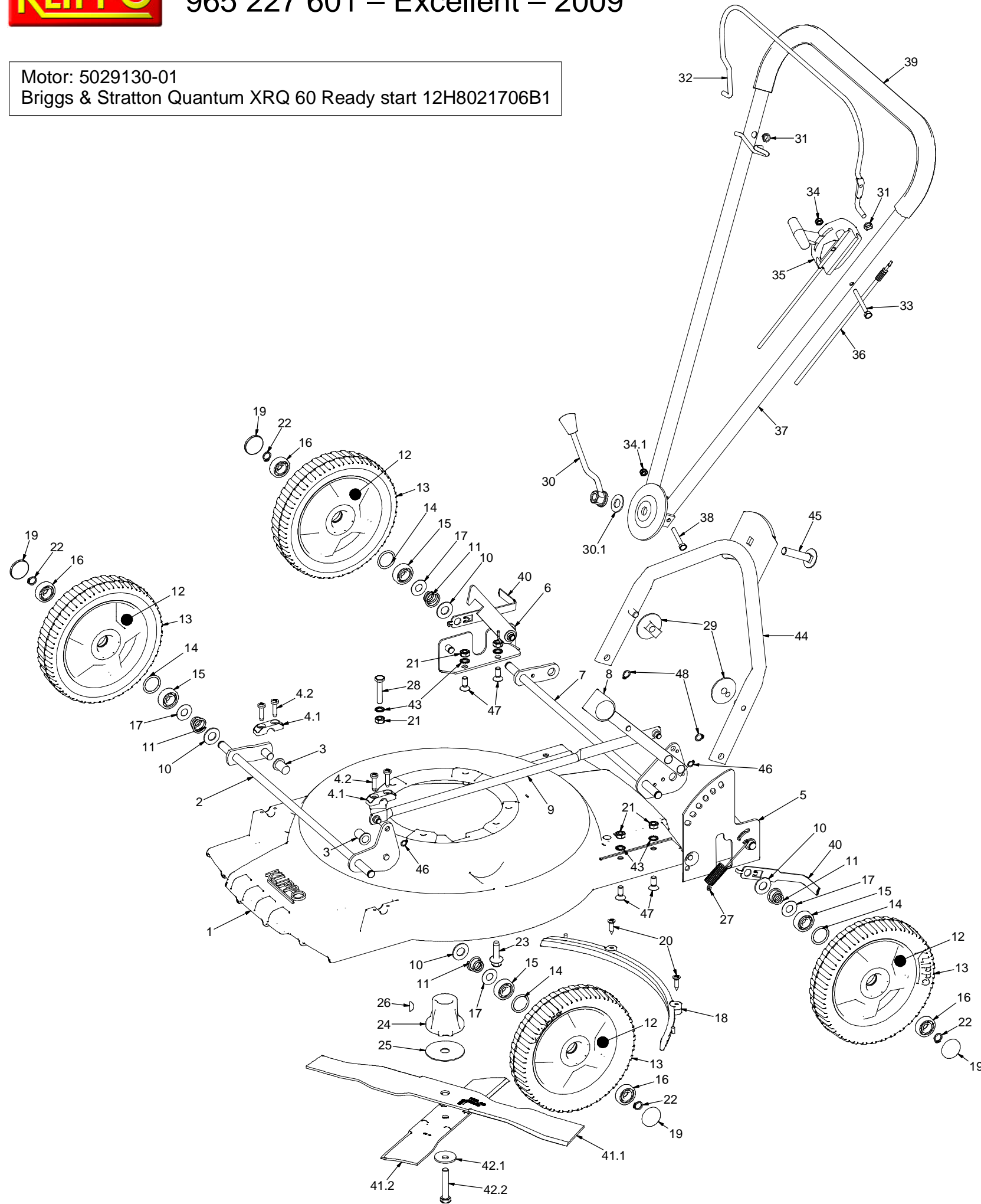




965 227 601 – Excellent – 2009

Motor: 5029130-01
Briggs & Stratton Quantum XRQ 60 Ready start 12H8021706B1



Pos	Art.number	Art.nr Klippo	Description
1	5032479-01	0119	COVER 48, RED
2	5032693-01	0713	FRONT SHAFT 48
3	5028981-01	7411	CASING, RED
4	5032719-01	0902	FRONT SHAFT HOLDER WITH SCREWS
5	5032490-01	0207	HANDLE HOLDER LEFT, RED
6	5032658-01	0507	CORNER RIGHT, RED
7	5032580-01	0272	REAR SHAFT
8	5044647-01	7418	KNOB, BLACK
9	5032495-01	0228	HEIGHT ADJUST BAR 48, RED
10	5044573-01	7033	WASHER SRB 28x14x2 FZ
11	5033330-01	2220	COMPRESSION SPRING
12	5032754-01	1018	FREE WHEEL, RED
13	5029451-01	1072	TYRE 43
14	5044618-01	7092	SPACER
15	5032429-01	70091	BALL BEARING Ø12/32x10
16	5028827-01	70081	BALL BEARING Ø12/32x9
17	5044576-01	7036	WASHER 27x12,2x0.5 FZ
18	5032430-01	7437	MULCHER WALL 48
19	5032751-01	1010	HUB CAP
20	5044565-01	7024	SCREW KFTS 6.3X25 FZ
21	5044572-01	7032	NUT M6M M8 FZ
22	5044583-01	7042	CLAMP RING SGA 12X1.5
23	5028829-01	70701	SCREW DG-93x30Z FZ
24	5032583-01	0301	BLADE BRACKET
25	5032594-01	0323	FIBRE WASHER
26	5044605-01	7075	WOODRUF WEDGE
27	5032576-01	0264	TENSION SPRING
28	5044569-01	7028	SCREW M6S M8x40 FZ
29	5044640-01	7410	ADJUSTING WHEEL, BLACK
30	5032982-01	1300	BALL HANDLE WITH WASHER
31	5033209-01	1554	LOOP BUSHING
32	5032970-01	1281	CONTROL BAR, RED
33	5028823-01	70021	SCREW M6S M6x55 FZ
34	5044561-01	7018	LOCK NUT M6 NYLOCK FZ
35	5032998-01	1315	THROTTLE CONTROL
36	5032999-01	1318	BRAKE WIRE
37	5033159-01	1391	HANDLE UPPER, YELLOW
38	5044685-01	7807	SCREW M6S M6x40 FZ
39	5230528-01	N/A	HANDLE GRIP, BLACK
40	5032773-01	1087	WHEEL CLEANER
41	5029689-01	6008	CROSS CUT 48
42	5032727-01	0908	SCREW AND CUP SPRING
43	5044580-01	7039	LOCK WASHER 8.4 FZ
44	5032843-01	1130	HANDLE LOWER, YELLOW
45	5044566-01	7025	WAGON BOLT M12x55
46	5044581-01	7040	CLAMP RING SGA 8X0.8
47	5044570-01	7029	SCREW MFS M8X18 FZ
48	5044582-01	7041	CLAMP RING SGA 10X1

REMARKS:

POS 7: INCLUDE POS 8.

POS 12: INCLUDES POS 13, 14, 15 AND 16.

POS 37: INCLUDES POS 34.1, 38 AND 39.

POS 44: INCLUDE POS 45.

KITS:

5029322-01 (0924) BLADE BRACKET
CONSIST OF 24, 25, 26, 42.1 AND 42.2

5032722-01 (0903) ACCESSORIES FOR WHEEL:
CONSIST OF POS 11, 17, 19 AND 22 (4 OF EACH)